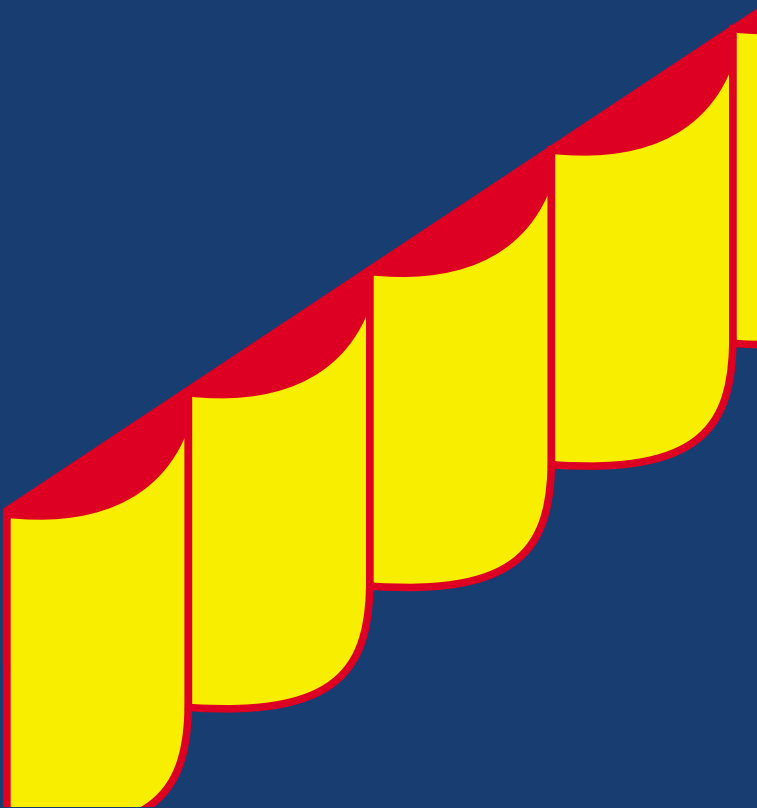


HOW TO

5

Know how. Can do.

Installing landscape garden edging.



PlaceMakers

www.placemakers.co.nz

Landscape Edging

Landscape edging comes in convenient 1.0 metre lengths*. It is available in heights of 200mm and 300mm generally, with other heights available in some areas. The landscape edging is made from ground treated, long lasting half rounds which are fixed together with two galvanised wires to form a 1.0 metre length.

Tools Required

All of the work described on this page can be carried out using these hand tools.

- Hammer
- Tape Measure
- Spade

Materials required

- Landscape edging
- 90mm Galvanised Jolt Head Nails
- Treated H4 pegs

Depending on how you wish to finish and decorate the landscape edging you may also need:

- Builders mix and cement, or premixed concrete (compare costs for the amount you need)
- Paint or stain (optional)

*Landscape edging is also available in 4 and 5 metre lengths which can be installed by following the same installation procedure outlined here.

Installation Instructions

- 1 Lay the garden edging out on a driveway or footpath, flat side up. See Illustration 1.

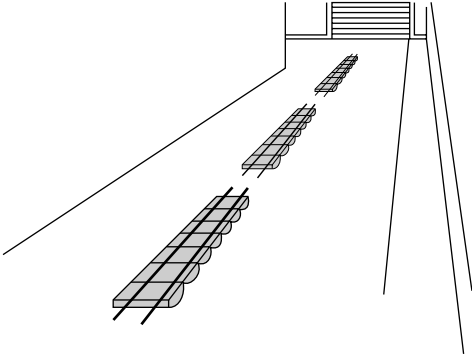


Illustration 1

- 2 Slide the protruding wires on the first section through the staples provided on the second section. Hammer the staples home. Repeat this procedure until you have the desired length of edging. See Illustration 2.

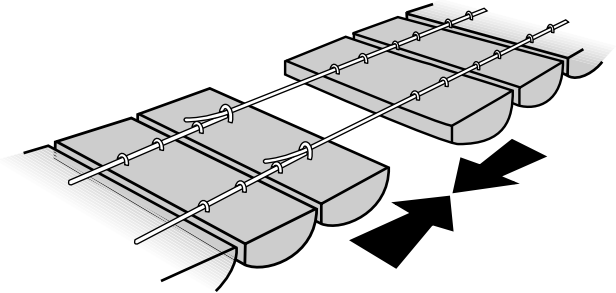


Illustration 2

- 3 Dig a trench for the edging. If you are going to set the edging in concrete the trench needs to be 30 to 40mm deep for 100mm high edging; and 100mm deep for edging 200mm high. If you are just going to compact the soil around it, make the trench between 50mm and 75mm deep. Stand the landscape edging in the trench, with the round side facing out. See Illustration 3.

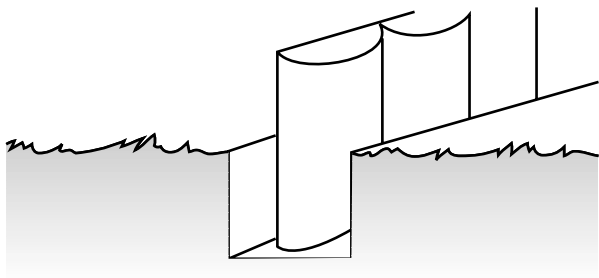


Illustration 3

- 4 Drive pegs behind the edging and nail firmly in place. Use one peg to a metre section of edging, more on the corners.

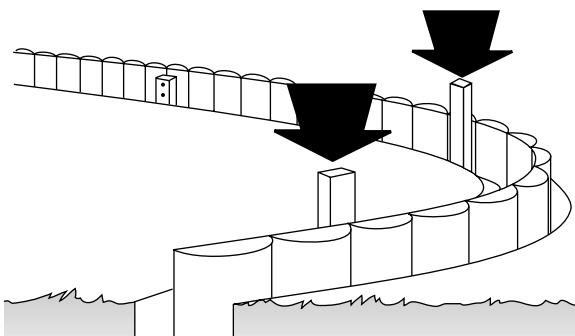


Illustration 4

- 5 Fill the trench with concrete or compacted soil and your landscape edging is now complete. See illustration 5.

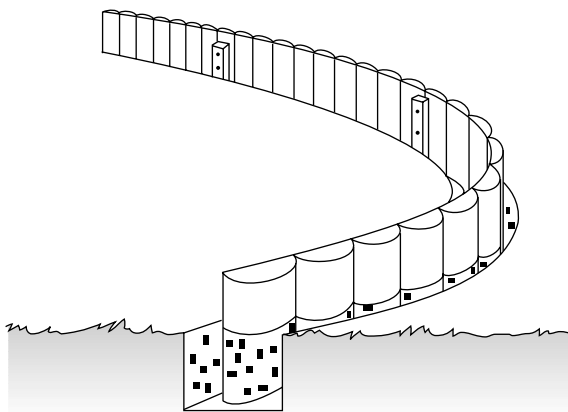


Illustration 5

This brochure is one of a series provided by PlaceMakers. Other titles provide instructions and ideas for construction and decorating products around the home.

Please Note:

Whilst the advice and recommendations contained in this brochure have been produced with proper care, they are offered only with the objective of assisting those interested in home improvement projects and PlaceMakers does not accept responsibility for the advice, recommendations, etc. contained herein.

Tackling another project?

Here is a list of some of the other project booklets available.

- Building a timber deck
- Installing timber posts and rails
 - Building a picket fence
 - Building a paling fence
 - Working with concrete
- Applying panels to stud walls
- Framing and hanging a door
 - Installing hinges
 - Installing ceiling tiles
- Saving energy around your home
 - Securing your home
 - Painting exteriors
 - Painting interiors
 - Preparing to paint
 - Staining timber
 - Building a pergola
- Building timber retaining walls
 - Laying paving
- Tiling interior walls and floors
 - Maintaining your home
- Fitting bathroom panels and shower linings

Produced in association with



The Building Research Association of New Zealand

PlaceMakers

Know how. Can do.